

EXTRACT

MEVDC2

TECHNICAL INFORMATION

MEVDC2 MULTI POINT EXTRACT

A QUIET, ENERGY EFFICIENT, LOW DEPTH CENTRAL EXTRACT SYSTEM.
SAP Q RECOGNISED.



BENEFITS

MEETS BUILDING REGULATIONS

SAP Appendix Q recognised. Part F&L - England & Wales. Scottish technical handbook (BRE398 referenced). Technical booklet K1998.

HIGH PERFORMANCE

Up to 100l/s.

MOST EFFICIENT

Latest DC motors provide high performance with low SFP within their respective class.

QUICK INSTALLATION

Unique locating bracket enables the units to be fixed in any plane, quickly and efficiently at either 1st fix or 2nd fix stage.

COMPACT

Low profile unit - only 190mm deep.

COST EFFECTIVE SOLUTION

One fan, one hole forming – build cost saving.

EASY MAINTENANCE

Quick and simple to maintain.

QUIET SOLUTION

Low noise continuous ventilation.

EXTRA SECURITY

No need to open windows.

SIMPLE CONTROLS

Ease of use.

EASY COMMISSIONING

One fan within system.

FLEXIBLE SOLUTION

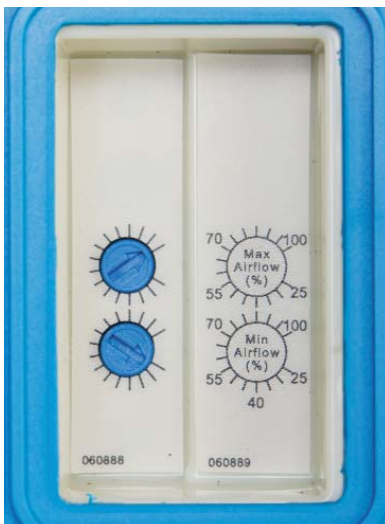
Unit can be fixed horizontally or vertically.

ADDED STRENGTH

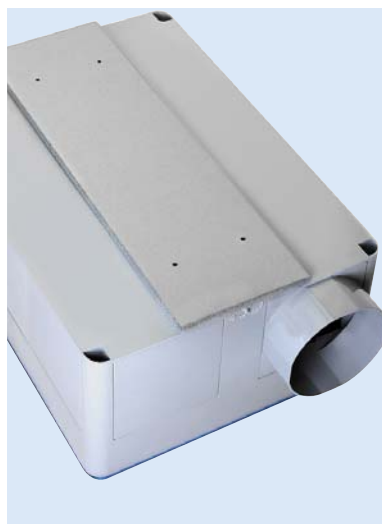
ABS moulded case & lid provides longer life and a more robust unit.

WARRANTY

3 year warranty for peace of mind.



Simple controls.



Simple fixing bracket.



ABS moulded case and lid.

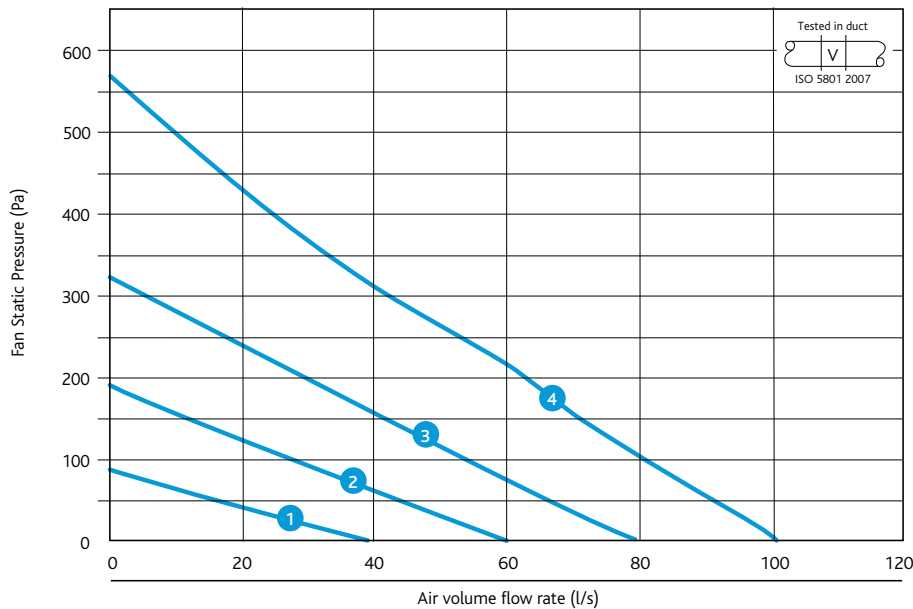
EXTRACT

MEVDC2

TECHNICAL INFORMATION

PERFORMANCE - MEVDC2

MEVDC2 Multi point Extract



Note: Above are variable speeds, not set speeds.

Casing



Code description (example)

MEVDC2

|
1

1. Mechanical Extract Ventilation Unit

MEVDC2

ELECTRICAL & SOUND

Curve	Power Consumption Watts	FLC Amps	Open inlet sound power levels dB re 1pW								Breakout Noise Level dBA@3m
			63	125	250	500	1K	2K	4K	8K	
1	8	0.16	44	44	48	29	22	22	17	13	25
2	16	0.19	46	47	52	35	31	31	26	22	30
3	29	0.25	48	49	56	39	37	37	32	28	34
4	56	0.38	49	51	58	42	42	42	37	33	38

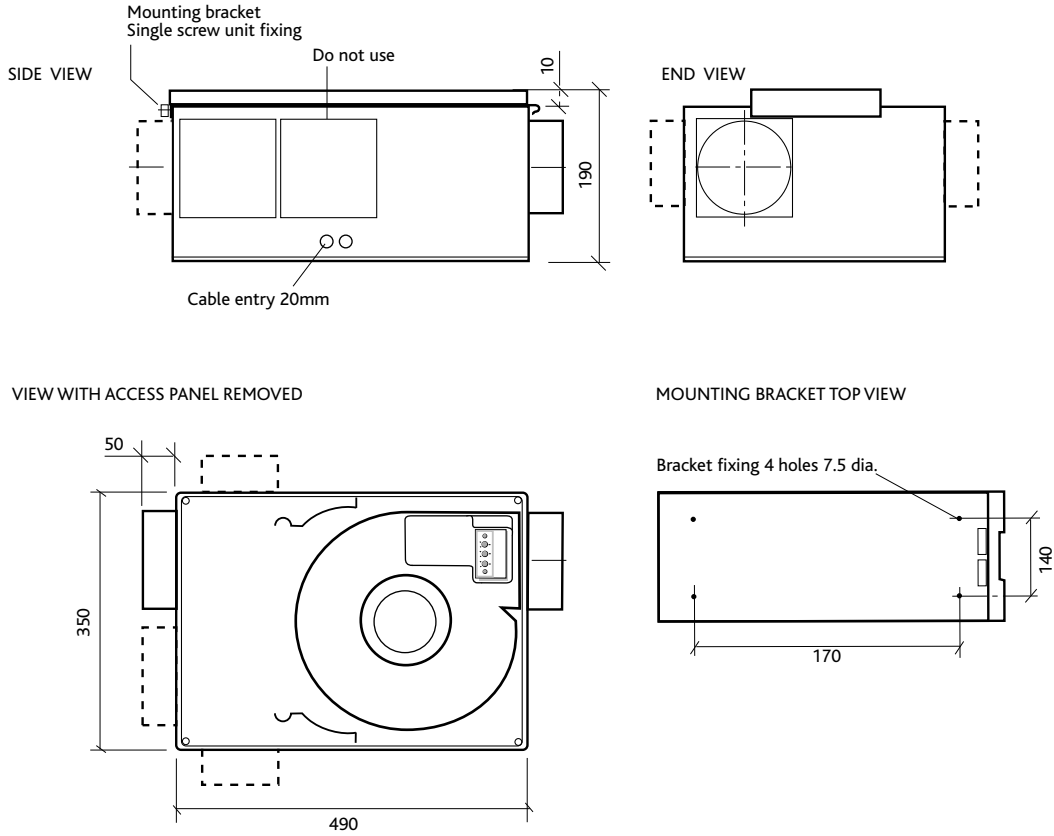
Note: above sound level figures are for unlined unit. See MEVDC for lined options. Unit has a soft start feature as standard therefore the starting current is the same as the full load current. Step curves are for information purposes only and are not individual units. The electrical and sound information in the table is nominal.

Note: dBA figures are calculated based on hemi-spherical propagation.

SAP APPENDIX Q TEST RESULTS

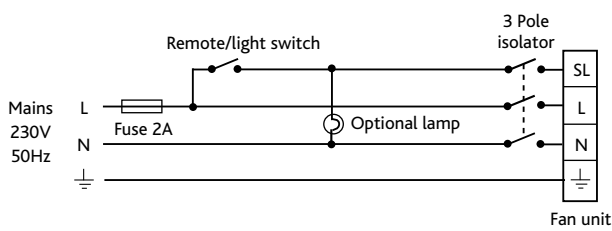
Application	Specific fan power (W/l/s) MEVDC2	Energy Saving Trust Best Practice Compliant
Kitchen + 1 wetroom	0.35	Yes
Kitchen + 2 wetrooms	0.30	Yes
Kitchen + 3 wetrooms	0.31	Yes
Kitchen + 4 wetrooms	0.33	Yes
Kitchen + 5 wetrooms	0.38	Yes

DIMENSIONS (MM) - MEVDC2

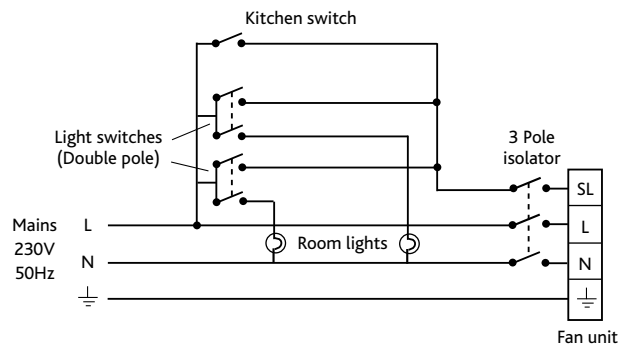


WIRING - MEVDC2

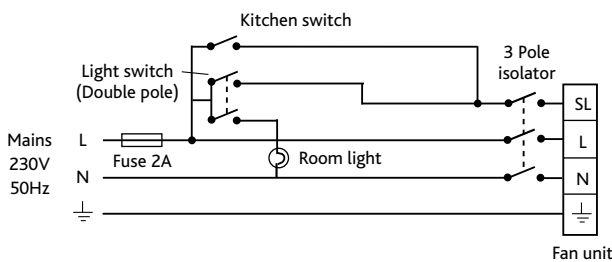
Unit serving Bathroom only



Unit Serving Kitchen and two Bathrooms



Unit Serving Kitchen and Bathroom



All field wiring and switches by others.

CONSULTANTS SPECIFICATION

MEVDC2 UNIT

The unit shall be designed specifically for incorporation within a system designed to comply with the requirements of Part F Building Regs. Ducting and grilles forming part of the system are specified elsewhere.

The unit shall be manufactured by a BSI Registered Firm with ISO 9000 certification. The unit's casing shall be of ABS, Moulded plastic.

The unit shall incorporate a low profile single point mounting bracket for horizontal or vertical mounting of the unit. When installed the unit shall not project any more than 190mm from the surface onto which it installed.

Air discharge from the unit shall be via a tapered spigot for easy connection to ducting. The unit shall be capable of multiple air inlets formatting. The unit casing shall have the facility to allow the connection, via tapered air inlet spigots supplied with one off 125mm diameter spigot.

The unit shall be constructed with one removable panel allowing full maintenance access. The unit shall incorporate a fully speed adjustable (note: stepped speed control shall not be acceptable) low energy, high efficiency DC fan/motor assembly with sealed for life bearings designed to operate continuously at a pre-set "background" design airflow rate with the ability to increase to a pre-set "boost" design airflow rate as and when required. It shall operate up to an ambient temperature of 40°C and be fitted with a locked rotor protection device.

The impeller should be a centrifugal backward curved type, dynamically balanced mounted directly onto the motor.

The unit shall incorporate electrical connections to allow for the unit's "boost" airflow to be triggered by:

A switched live signal, 230V.

The MEVDC2 unit shall be offered with a 3 year warranty.